

Document level: East Locality
Code: AMHEC2
Issue number: 2.1

Liaison Psychiatry Provision and MHA Pathway – East & South Cheshire

Lead executive	Clinical Director
Authors details	Team Manager Liaison Psychiatry East and South Cheshire Head of Clinical Services

Type of document	Standard Operating Procedure
Target audience	All CWP staff in Macclesfield District General Hospital and Leighton Hospital Acute Hospitals, .
Document purpose	To provide an operational framework for Mental Health Act assessments in the AED setting and to avoid delayed discharge from AED.

Approving meeting	SMH Business and Governance Meeting	Date 13-Nov-19
Implementation date	13-Nov-19	

CWP documents to be read in conjunction with	
CP68	Liaison Psychiatry Operational Policy
MH16	Section 135 and 136 of the Mental Health Act 198
CP20	Trustwide Operational Policy for Crisis Resolution Home Treatment Team.
GR19	Out of Hours Clinical Management Support
CA3	Guidelines for the assessment and management of psychiatric emergency in young people under 18 years presenting to or admitted to Arrowe Park Hospital, Macclesfield DGH, Countess of Chester, Leighton Hospital

Document change history	
What is different?	Revision of AMEC 2 Mental Health Out of Hours Service Provision - Guidance
Appendices / electronic forms	Policy updated to include guidance about referral pathways for Sec 136 admitted to AED and to incorporate service developments. Updated appendices links
What is the impact of change?	Aim is to reduce 12 hours breaches in AED and extended length of stay in AED.

Training requirements	Yes - Training requirements for this policy are in accordance with the CWP Training Needs Analysis (TNA) with Education CWP.
-----------------------	--

Document consultation	
Clinical Services	Liaison Psychiatry teams
Corporate services	Head of Clinical Service and Director of Services
External agencies	Operational Manager for AED MDGH

Financial resource implications	None
---------------------------------	------

External references	
---------------------	--

1.

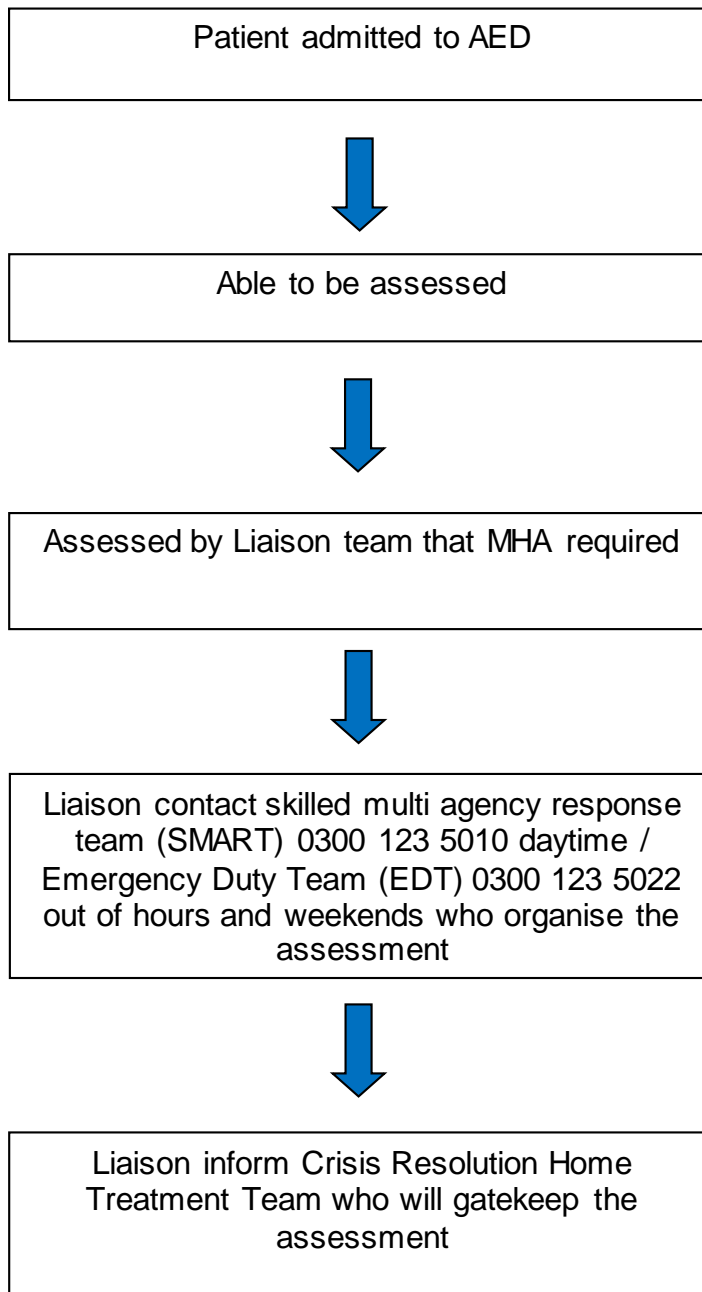
Equality Impact Assessment (EIA) - Initial assessment	Yes/No	Comments
Does this document affect one group less or more favourably than another on the basis of:		
- Race	No	
- Ethnic origins (including gypsies and travellers)	No	
- Nationality	No	
- Gender	No	
- Culture	No	
- Religion or belief	No	
- Sexual orientation including lesbian, gay and bisexual people	No	
- Age	No	
- Disability - learning disabilities, physical disability, sensory impairment and mental health problems	No	
Is there any evidence that some groups are affected differently?	No	
If you have identified potential discrimination, are there any exceptions valid, legal and/or justifiable? Select		
Is the impact of the document likely to be negative?	No	
- If so can the impact be avoided?	Select	
- What alternatives are there to achieving the document without the impact?	Select	
- Can we reduce the impact by taking different action?	Select	
Where an adverse or negative impact on equality group(s) has been identified during the initial screening process a full EIA assessment should be conducted.		
If you have identified a potential discriminatory impact of this procedural document, please refer it to the human resource department together with any suggestions as to the action required to avoid / reduce this impact. For advice in respect of answering the above questions, please contact the human resource department.		
Was a full impact assessment required?	No	
What is the level of impact?	Select	

Contents

Quick reference flowchart 1 – Liaison Psychiatry MHA Assessment (in area)	4
Quick reference flowchart 2 – Liaison Psychiatry MHA Assessment (out of area)	5
Quick reference flowchart 3 – Section 136 (in area)	6
Quick reference flowchart 4 – Section 136 (out of area)	7
1. Introduction.....	8
2. Service Specifications.....	8
3. Referrals.....	8
4. Transport.....	8
5. Response times.....	9
Appendix 1	10

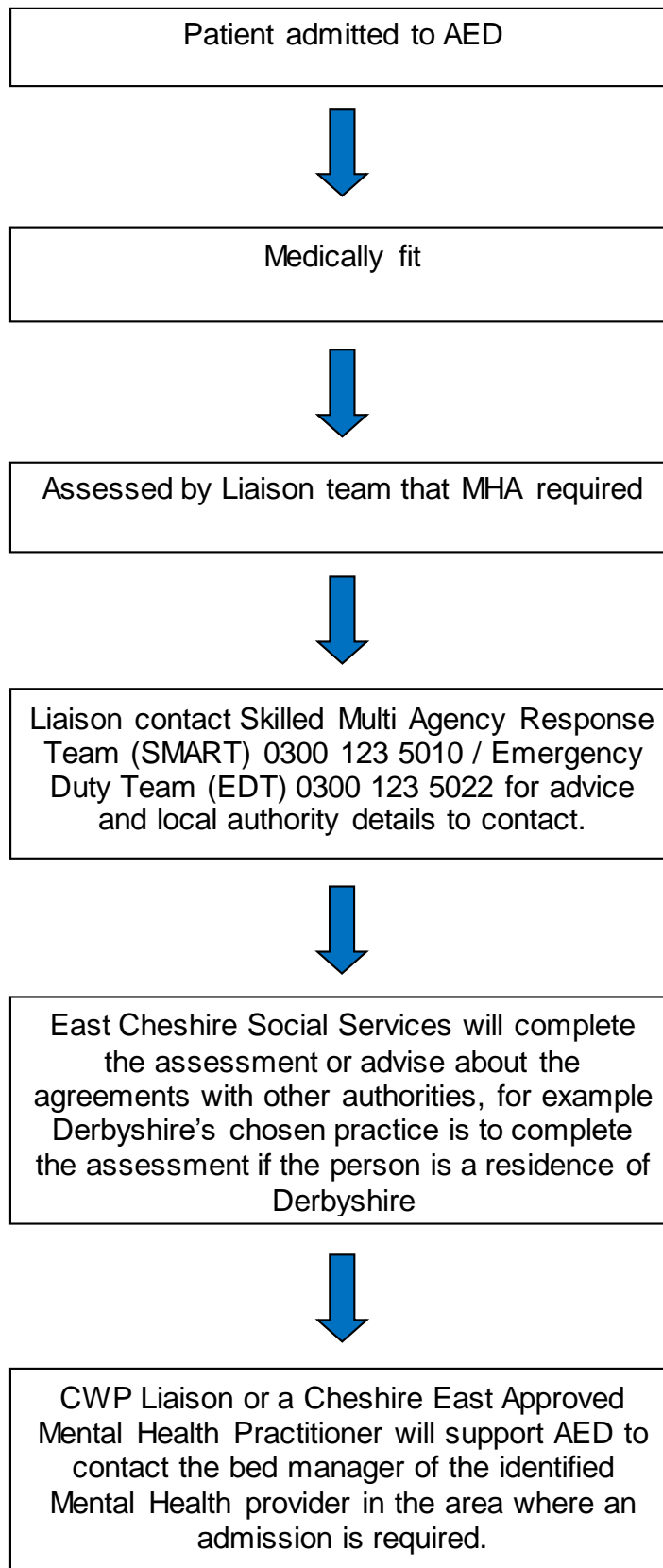
Quick reference flowchart 1 – Liaison Psychiatry MHA Assessment (in area)

For quick reference the guide below is a summary of actions required.



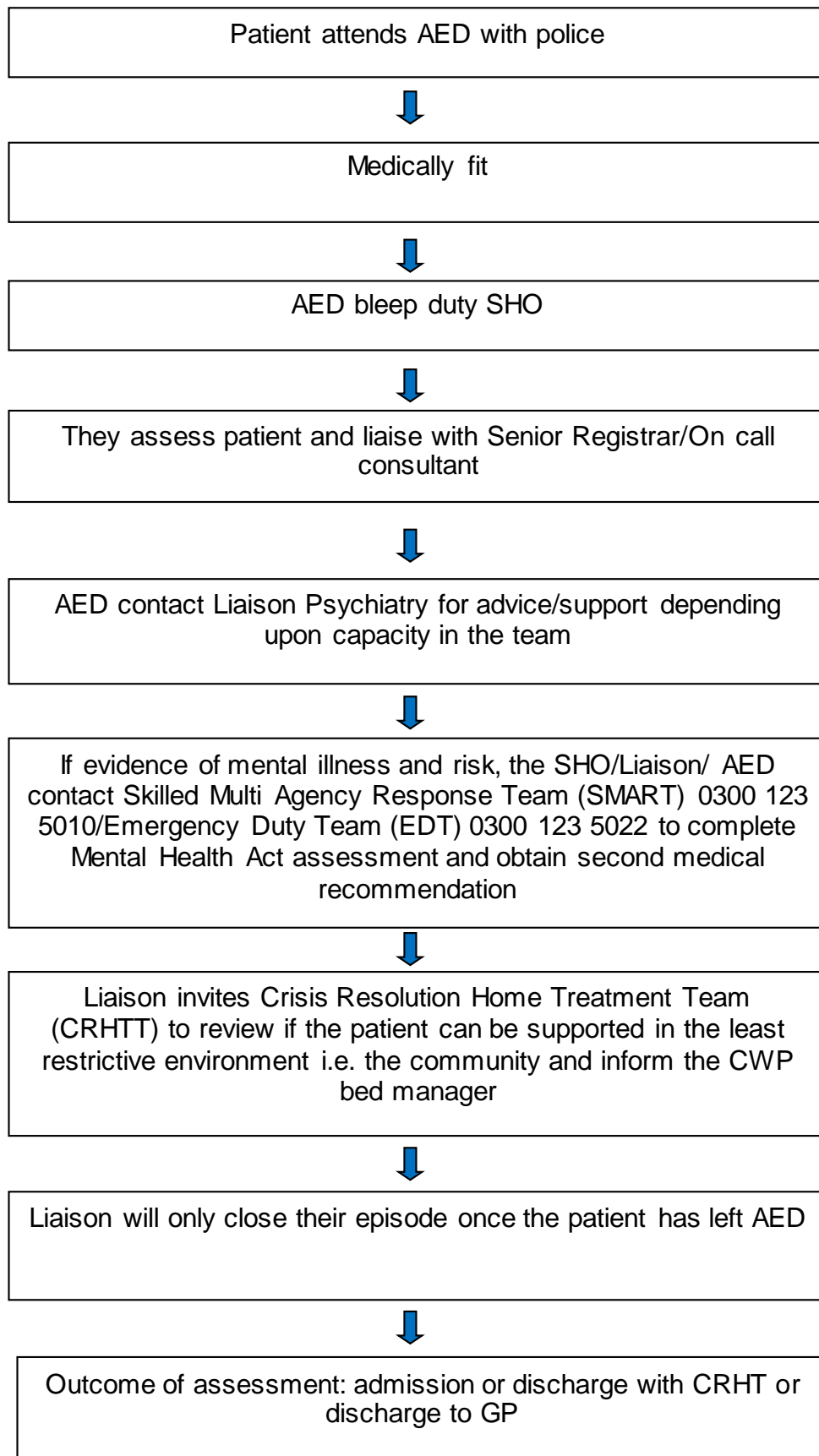
Quick reference flowchart 2 – Liaison Psychiatry MHA Assessment (out of area)

For quick reference the guide below is a summary of actions required.



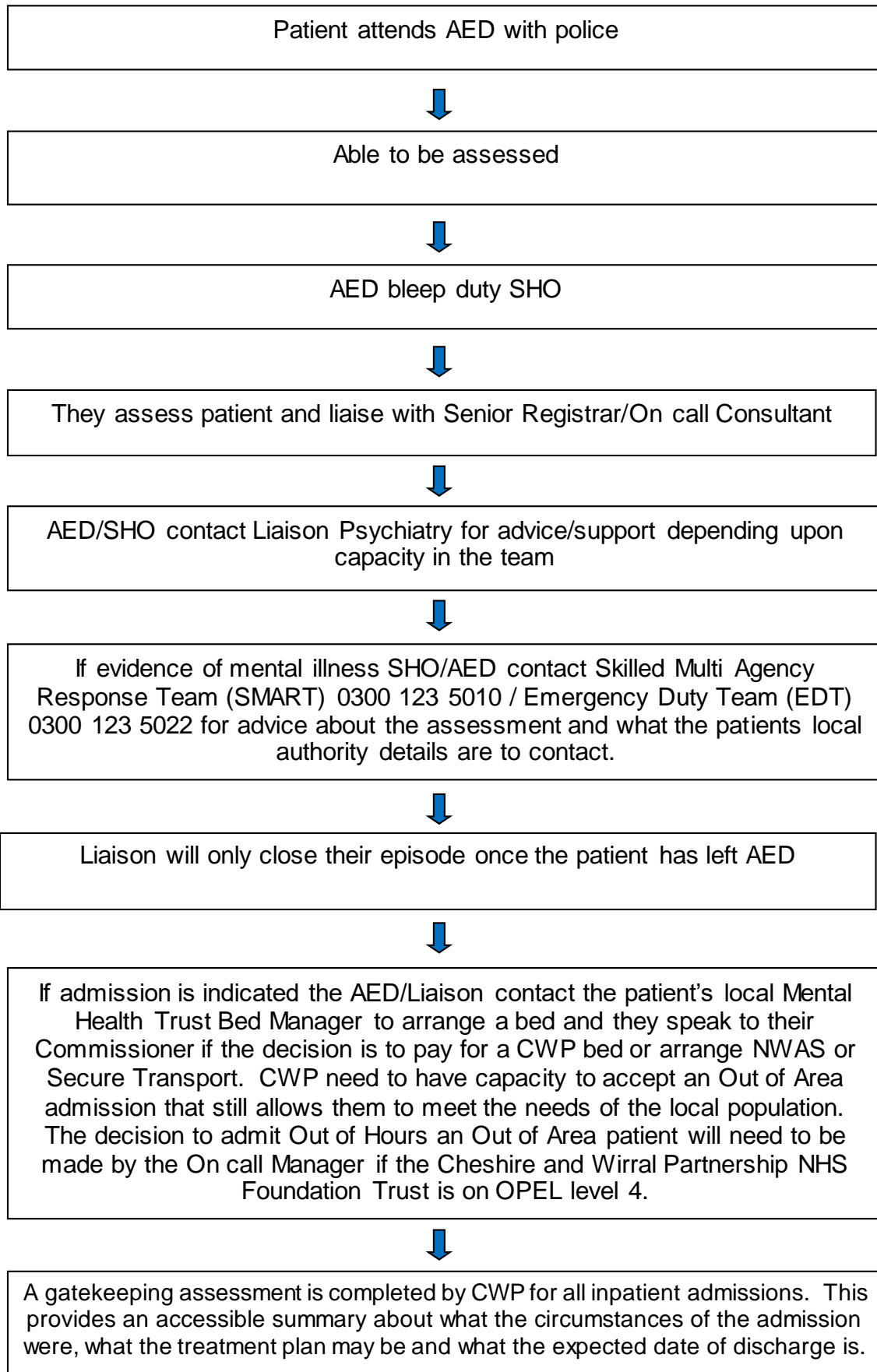
Quick reference flowchart 3 – Section 136 (in area)

For quick reference the guide below is a summary of actions required.



Quick reference flowchart 4 – Section 136 (out of area)

For quick reference the guide below is a summary of actions required.



1. Introduction

The purpose of this document is to set out the Standard Operating Procedure (SOP) for the Out of Hours Service provided by Adult Mental Health Services in East Cheshire and South Cheshire ([Appendix 1](#)). It will also provide guidance in regard to Mental Health Act assessments and Section 136 assessments.

The Liaison Psychiatry service for East and South Cheshire is located on two sites: Leighton Hospital in Crewe; and the District General Hospital in Macclesfield.

The aims of the Liaison Psychiatry service is to provide a timely response to referrals received from the Accident and Emergency Department (AED), and that a follow up and discharge plan has been agreed and communicated with the relevant agencies including AED and the General Practitioner.

2. Service Specifications

The current service specification for Liaison Psychiatry for East and Central Cheshire states that the hours of operation that are commissioned are:

East Cheshire: 9am – 6pm Monday to Friday including public holidays.

That between 8pm and 8am, a limited service of one Out of Hours practitioner is provided giving priority to the Accident and Emergency Department with support from the Psychiatric trainee doctor or for more complex presentation via the Consultant Psychiatrist on call.

Central Cheshire: 9am-6pm 7 days per weeks.

The provider will ensure that outside of normal opening hours, service users contacting the service in an emergency are directed to alternative sources of support out of hours. In the case of this service, between 6 pm and 9 am a limited service is provided, giving priority to the Accident and Emergency Department by the Out of Hours Practitioner with support from the Psychiatric trainee doctor for verbal advice.

The current shift patterns for the Liaison Psychiatry team for both sites are 0800-1800, 1100-2100, and 2030-0900 seven days per week.

3. Referrals

The service will take emergency referrals for mental health presentations from AED, GP services, and assist in the co-ordination of Section 136 assessments in the designated Place of Safety located in Macclesfield AED. The Out of Hours service will accept referrals for initial assessments and reviews from medical wards when they have capacity and will prioritize AED assessments.

4. Transport

North West Ambulance Service is commissioned to provide transport between different hospitals.

The Trust has a range of Ambulances that are capable of dealing with patients with varying clinical acuity levels. When booking you should identify the minimum level required to deal with your patient (as we can allocate this or above as resources become available).

Resource	Crew	Patient acuity
Patient Transport Service	X2 Patient Transport staff	Transport only (no clinical intervention required during the journey)
Urgent Care Service	X2 Urgent Care Service Staff	Low-Medium Acuity
Volunteer Ambulance Service (St.John Ambulance & British Red Cross Society)	Patient Transport and/or Emergency Transport qualified (x2 staff). These may operate at Intermediate Tier level depending on additional crew combination.	Medium Acuity generally, but this will be determined by crew combination
Intermediate Tier	EMT2/Ambulance Technician or Paramedic working with a Urgent Care Service Staff member or EMT1	Medium-High Acuity
Paramedic Emergency Service	EMT1 or EMT2/Ambulance Technician with a Paramedic or a combination of these	High Acuity

NWAS and Urgent Care Referral Scheme, Memorandum of Understanding between North West Ambulance Service NHS Trust and East Cheshire Trust.

When transportation is booked the crew required needs to be considered and will not necessarily require a Paramedic. The contact number for NWAS is 0345 140 0144.

If there is a significant delay, if there are no crews available, or if the patient is to be transferred out of the North West an alternative will be Rapid and Secure transport. The cost of this provision has been agreed by commissioners for East and South Cheshire CCGs. The contact number for Rapid and Secure is 0333 240 4077

5. Response times

A RAG system will be used to escalate any delayed response to complete Section 136 mental health act assessments to avoid breaching 12 hour waits in AED and avoid Sec 136 lapsing.

- **Green:** 0-4 hours - AED have contacted Duty SHO to complete Sec 136 assessment and an assessment time is agreed.
- **Amber:** 4-8 hours – Duty SHO not available – AED contact Liaison Psychiatry Team to clarify a response time and if Duty Registrar is available. Liaison Psychiatry team contact SHO and update On Call Manager and On Call Consultant.
- **Red:** 8-12 hours – Duty SHO unable to complete Mental Health Act assessment because delay in accessing patient and then delay in Approved Mental Health Practitioner attending assessment. Additional delay if Out of Area patient and then accessing bed.

Liaison Psychiatry updates Duty Manager and Duty Consultant. Clarify reason for delay and escalate to Director if decision needed to admit to CWP bed.

Appendix 1

Service Specifications for East CCG and South and Vale CCG regarding Liaison Psychiatry.

[East CCG](#)

[South and Vale CCG](#)